

# Beef and Lamb Purchasing Guide for Offal and Variety Meats

## 牛、羊分切肉和 副产品购买指南



# Specifications are important

规格

EBLEXTrade

Home News Quality Standard meat Cutting specifications Dietary advice Members' materials Recipes Resources Contacts Links

London, 14th 11, 2012

Cutting Specification Manuals

Click on Beef, Veal or Lamb to view specifications

Quality Standard Beef

Quality Standard Lamb

Quality Standard Veal

Beef cutting specification manual

page 41 of 112

Beef Patella and Cartilage (Knee Bone)

EBLEX Code: 09a B01  
PLC Code: 11302

1. Patella is the bone of the knee of the animal, with cartilage attached to the ends.	2. Cartilage is the soft tissue between the bones.	3. Patella and cartilage are sold together.	4. Patella and cartilage are sold together.
Preparation:	Remove excess fat and skin as much as possible. Bone is to be removed or removed at 80% per piece. (kg per animal)		
Yield:	Yield in three parts and parts weighing not over 20 kg beef net weight per animal.		
Chosen:			
Season:			
Storage:			
Use Best Cook:			

EBLEX

Lamb cutting specification manual

page 44 of 112

Kidney

EBLEX Code: L810  
PLC Code: 12400

1. Kidney is the organ of the animal, with the outer covering, the kidney, and the inner covering.	2. Kidney is the organ of the animal, with the outer covering, the kidney, and the inner covering.	3. Kidney is the organ of the animal, with the outer covering, the kidney, and the inner covering.	4. Kidney is the organ of the animal, with the outer covering, the kidney, and the inner covering.
Preparation:	Remove excess fat and skin as much as possible. Bone is to be removed or removed at 80% per piece. (kg per animal)		
Yield:	Yield in three parts and parts weighing not over 20 kg lamb net weight per animal.		
Chosen:			
Season:			
Storage:			
Use Best Cook:			

EBLEX

Detailed step by step cutting specifications for all the cuts in this leaflet are available to download from

[www.eblex-bpex-export.org.uk](http://www.eblex-bpex-export.org.uk)

## Beef offal and variety meats

Quality Standard lamb, mutton and beef red and green offal as well as variety meats from the carcass come with the guarantee of high safety due to a farm assurance programme. The products are subject to strict veterinary controls at abattoirs and cutting plants, and before shipments. Our exporters have built a strong reputation for quality in the selection, processing, packaging and freezing for more than 130 products from sheep and cattle. In terms of logistics, exporters have built a significant trade to the Far East based on delivering what the local discerning customers want, just in time. Products are available frozen in standard 20 kg lined card boxes and for specific items 10 kg card boxes in full or mixed containers. However, our exporters also pride themselves on their flexibility to adjust to customer requirements in terms of product presentation and packaging.

## 牛分切肉和·副产品

英国高品质的牛、羊红肉，绿色无公害副产品以及各种各样的其他肉产品均在高标准的农场安全保障系统下生产、加工。这些产品在装运前都经过在屠宰厂或加工厂中兽医严格的监管。我们的出口商在产品挑选、加工、包装以及冷冻方面已经建立起了极好的口碑，目前各种牛、羊产品品种已超过130种。在组织运输方面，我们的出口商能够及时地为远东地区输送大量符合当地需求的产品。这些产品通常情况下是20公斤纸箱包装，当然也有为某些产品特别设计的10公斤纸箱包装，混柜或整柜装运均可。不仅如此，我们的出口商对于他们的灵活性方面也颇感自豪：他们可以根据客户的不同需求在产品展示和包装方面进行灵活调整。



**Beef flank membrane**

膈筋

EBLEX Code: B311

MLC Code: 11285



**Beef paddywack whole**

整根板筋

EBLEX Code: B020

MLC Code: 11301



**Beef paddywack middle**

中段板筋

EBLEX Code: B021

MLC Code: 11302



**Beef paddywack tips**

板筋尖

EBLEX Code: B022

MLC Code: 11303



**Beef achilles tendon**

腱筋

EBLEX Code: B322

MLC Code: 11304



**Beef spoon tendons**

勺筋

EBLEX Code: B323

MLC Code: 11305



**Beef long hindquarter tendons**

后蹄筋

EBLEX Code: B325

MLC Code: 11306



**Silverskin**

会扒筋

EBLEX Code: B007

MLC Code: 11307



**Beef scapular cartilage**

肩胛软骨

EBLEX Code: B340

MLC Code: 11410



**Beef femur**

后腿棒骨

EBLEX Code: B801

MLC Code: 11501



**Beef patella meat on**

带肉膝盖骨

EBLEX Code: B802

MLC Code: 11502



**Beef humerus**

前腿骨

EBLEX Code: B804

MLC Code: 11511





**Beef radius**

牛径骨

EBLEX Code: B807

MLC Code: 11512



**Tibia**

牛胫骨

EBLEX Code: B806

MLC Code 11520



**Beef aitch bone cartilage**

牛臀部软骨

EBLEX Code: B805

MLC Code: 11551



**Beef aorta tube**

心管

EBLEX Code: B115

MLC Code: 91100



**Beef aorta flat**

心片

EBLEX Code: B116

MLC Code: 91101



**Beef lights**

肺

EBLEX Code: B102

MLC Code: 91210



**Beef spleen**

牛膀

EBLEX Code: B040

MLC Code: 91211



**Beef trachea tube**

气管

EBLEX Code: B120

MLC Code: 91220



**Beef trachea flat**

气管 (剖开)

EBLEX Code: B122

MLC Code: 91221



**Beef snouts, cooked**

熟牛鼻

EBLEX Code: B542

MLC Code: 91517



**Beef lip meat – papillae**

唇肉

EBLEX Code: B550

MLC Code: 91531



**Nasal septum**

鼻中隔

EBLEX Code: B544

MLC Code: 91541



**Beef cheek trimmed**

牛面碎肉

EBLEX Code: B520

MLC Code: 91550



**Beef heel**

牛蹄

EBLEX Code: B600

MLC Code: 91600



**Short tendons**

筋腱

EBLEX Code: B320

MLC Code: 91611



**Beef pizzle**

牛鞭

EBLEX Code: B401

MLC Code: 91701



**Beef pizzle sheath**

鞭皮

EBLEX Code: B402

MLC Code: 91702



**Beef testicle**

睾丸

EBLEX Code: B410

MLC Code: 91703



**Beef thin skirt membrane**

横膈膜

EBLEX Code: B092

MLC Code: 91812



**Beef tripe**

大肚

EBLEX Code: B210

MLC Code: 91900



**Beef plain tripe**

原肚

EBLEX Code: B211

MLC Code: 91901



**Beef honeycomb tripe**

金钱肚

EBLEX Code: B212

MLC Code: 91902



**Beef bible tripe**

百叶

EBLEX Code: B213

MLC Code: 91903



**Reed or abomasum**

红肚

EBLEX Code: B214

MLC Code: 91904



**Weasand flat**

食管片

---

EBLEX Code: B202

---

MLC Code: 91931



**Weasand or oesophagus**

食管

---

EBLEX Code: B201

---

MLC Code: 91930





Lamb offal and variety meats

羊分切肉和副产品





**Lamb tail**

羊尾

EBLEX Code: L001

MLC Code: 32120



**Lamb spare Ribs**

肋条骨

EBLEX Code: L815

MLC Code: 32266



**Lamb back bone**

脊骨

EBLEX Code: L810

MLC Code: 33521



**Lamb breast bone**

腹肋骨

EBLEX Code: L814

MLC Code: 35150



**Lamb paddywack**

板筋

EBLEX Code: L020

MLC Code: 37301



**Lamb back fat**

背部脂肪

EBLEX Code: L702

MLC Code: 37321



**Lamb body fat**

体表脂肪

EBLEX Code: L703

MLC Code: 37322



**Neck of lamb (barrel)**

羔羊脖

EBLEX Code: L811

MLC Code: 38170



**Neck of lamb (split)**

劈开羔羊脖

EBLEX Code: L812

MLC Code: 38171



**Lamb scapular cartilage**

肩胛软骨

EBLEX Code: L340

MLC Code: 38410



**Neck of mutton**

老羊脖

EBLEX Code: L813

MLC Code: 48170



**Lamb heart**

心脏

EBLEX Code: L110

MLC Code: 92200



**Lamb lights**

肺脏

EBLEX Code: L102

MLC Code: 92210



**Lambs liver**

羊肝

EBLEX Code: L300

MLC Code: 92300



**Lamb kidneys**

羊腰

EBLEX Code: L010

MLC Code: 92400



**Lamb kidneys – fat on**

羊腰带油

EBLEX Code: L012

MLC Code: 92402



**Lamb head without tongue**

去舌羔羊头

EBLEX Code: L501

MLC Code: 92501



**Lambs tongue**

羔羊舌

EBLEX Code: L512

MLC Code: 92502



**Lamb brain**

羔羊脑

EBLEX Code: L503

MLC Code: 92560

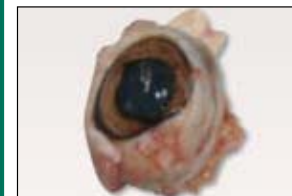


**Lamb eye**

羔羊眼

EBLEX Code: L504

MLC Code: 92570



**Lamb feet**

羔羊蹄

EBLEX Code: L600

MLC Code: 92600



**Lamb sweetbreads**

胸腺

EBLEX Code: L130

MLC Code: 92700



**Lamb pizzle**

羊鞭

EBLEX Code: L401

MLC Code: 92701



**Lamb thick skirt**

后横膈肌

EBLEX Code: L081

MLC Code: 92800





**Lamb tripe**

羔羊肚

---

EBLEX Code: L210

---

MLC Code: 92900



**Lamb internal fat**

羊内层脂肪

---

EBLEX Code: L701

---

MLC Code: 92960





EBLEX出口部协助出口商处理有关贸易发展, 市场资讯, 深入市场及运销英国肉类等。

The EBLEX Export Department ensures that trade development opportunities in export markets are identified and nurtured through the provision of market information, advice and support to exporters. EBLEX also aims to facilitate trade by securing market access to non-EU markets and to ensure that appropriate protocols and certification are in place to allow trade to take place.

All copyright including images and photography remain that of AHDB.

Any duplication of this leaflet is strictly forbidden. No duplication, either in part or full without prior consent from the publisher, is allowed. All images and copy remain the property of AHDB.

© Agriculture and Horticulture Development Board 2011. All rights reserved.

